

INSULTECH[®]

REMOVABLE, REUSABLE BLANKET INSULATION

FOR...
THE POWER
GENERATION
INDUSTRY



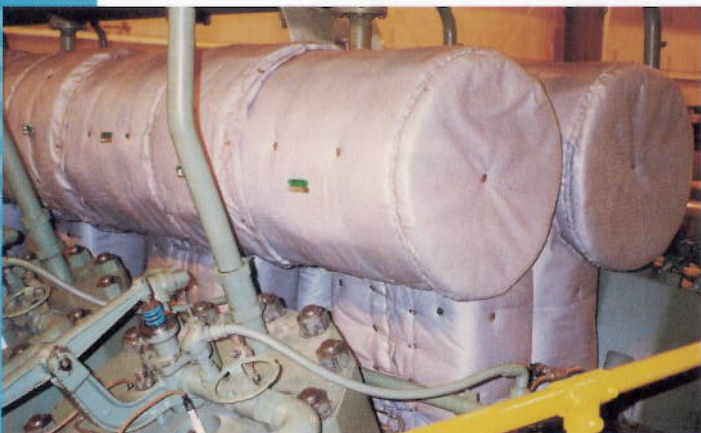
ENGINE EXHAUST TURBOCHARGER

Design: HT1100 MSGM - 2" thick
INSULTECH THERMAL



MARINE ENGINE EXHAUST & PIPING

Design: HT1100A-MSGM - 2.0" thick
INSULTECH ACOUSTIC/THERMAL



TCV-12 SECTIONAL MANIFOLD EXHAUST

Design: HT1100 MSGM - 2.0" thick
INSULTECH THERMAL

INSULTECH[®] Blanket Insulation...

...is a pre-engineered thermal acoustical insulation system designed to minimize insulation maintenance, improve engine performance and improve the surrounding work environment.

...eliminates the many typical problems associated with conventional cement block insulation.

...is removable and reusable. Blanket pieces can be installed and removed using in-house personnel. By following an installation assembly drawing, blanket pieces can be installed in tag number sequence.

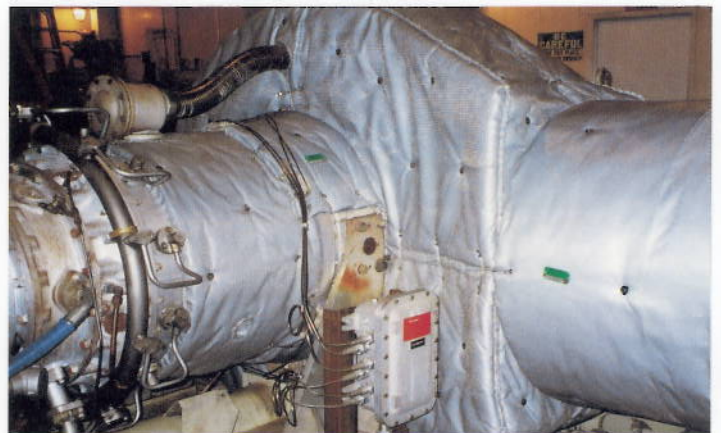
...is custom fit, through CAD technology allowing versatility in equipment coverage. Varying design construction accommodates operating temperatures of 1500°F (815°C).

Advantages

- Can be installed with plant personnel
- Can be reused numerous times
- Is a closed insulation system
- Is custom-fit to existing conditions
- Is an ideal replacement for Asbestos
- Is vibration resistant
- Is designed to reduce harmful noise

Applications

- Exhaust Piping
- Exhaust Flanges
- Exhaust Manifolds
- Turbo Charger Cases
- Expansion Joints
- Exhaust Cones
- By-Pass Piping
- Exhaust Housings



GAS TURBINE HOUSING

Design: HT1100 MSGM - 2.0" thick
INSULTECH THERMAL

APPLICATIONS



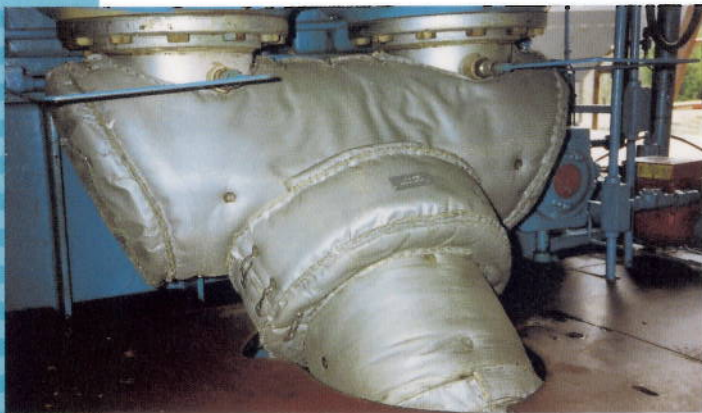
GEN-SET ENGINE EXHAUST

Design: HT1300AGM - 1.5" thick
INSULTECH THERMAL



GAS TURBINE INLET PIPING

Design: LT450A-TT - 1.5" thick 6 - 8 dBA Reduction
INSULTECH ACOUSTIC



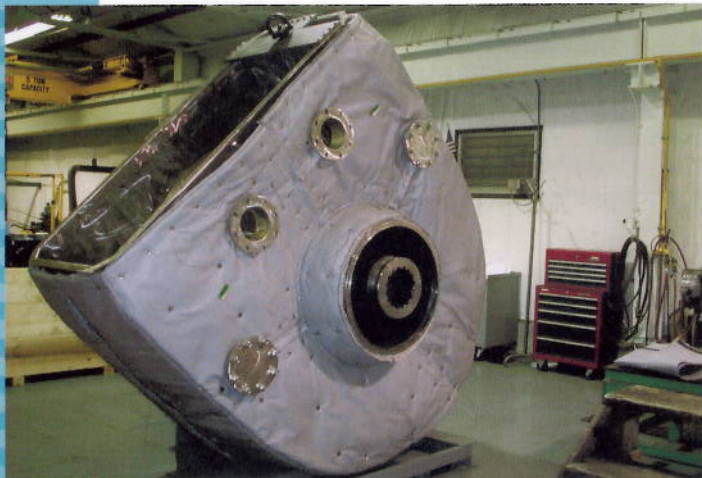
EXHAUST MANIFOLD TRANSITION

Design: HT1100A MSGM - 2" thick
INSULTECH ACOUSTIC/THERMAL



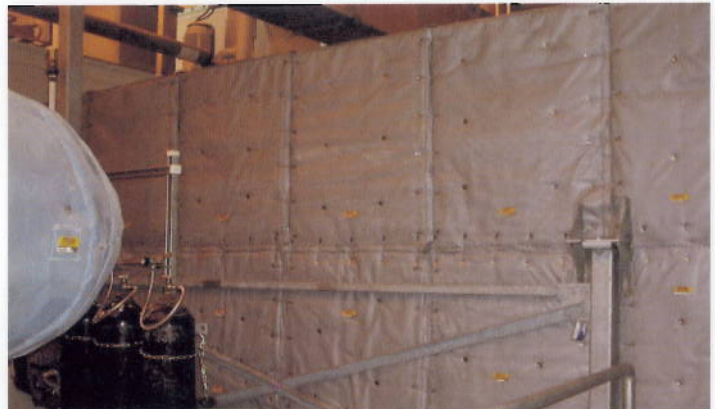
DE-HY SKID & PIPING

Design: LT450TT - Velcro Fasteners
INSULTECH THERMAL



GAS TURBINE HOUSING

Design: HT1100 MSGM - 1.5" thick
INSULTECH THERMAL



TURBINE EXHAUST DUCT

Design: HT1100A-MSGM - 2.0" thick
INSULTECH ACOUSTIC/THERMAL



GAS PIPELINE

Design: LT450A-TT - 2.0" thick 10 - 13 dBA Reduction
INSULTECH ACOUSTIC



ENTERPRISES OF W.N.Y. INC.