

# INSULTECH®

REMOVABLE, REUSABLE BLANKET INSULATION

**FOR...SOUND  
ATTENUATION**  
**Reduce Harmful  
Noise At The Source!**



## 16"x18" CENTRIFUGAL PUMP

Design: LT450A-TT-1.5" thick  
6.0 dBA Reduction



## OUTDOOR COOLING TOWER

Design: LT450A-TT-1.5" thick  
10 dBA Reduction

## INSULTECH® Blanket Insulation...

**...is a pre-engineered thermal acoustical insulation system** designed to reduce harmful noise levels and improve the surrounding work environment.

**...is custom-fit**, through CAD technology allowing versatility in equipment coverage. Virtually any irregular surface can be insulated and multipiece designs are typical for most equipment applications.

**...is a top quality design construction.** The recommended design LT450A-TT features an inner and outer chemical resistant Teflon fiberglass cloth, with high density fiberglass mat and barium sulfate loaded vinyl.

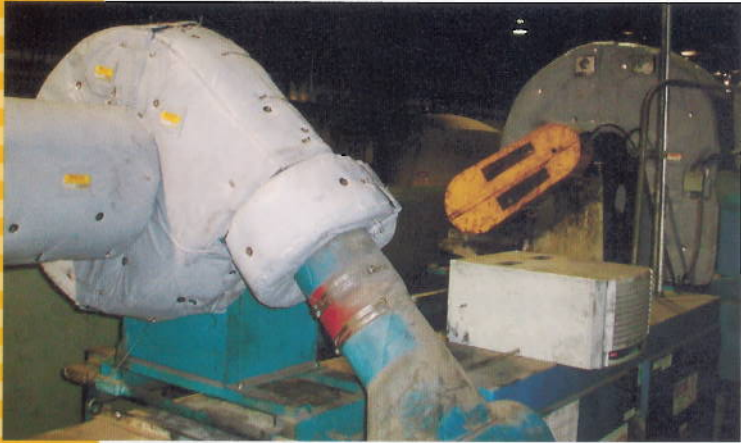
**...is removable and reusable.** Blanket pieces can be installed with minimal effort and they feature a stainless steel Wire-twist fastening system. No additional tools or materials are required for installation.



## CENTRIFUGAL LIQUID CHILLER

Design: LT250A-VP-1.5" thick  
4 - 8 dBA

# APPLICATIONS



## INDUSTRIAL BLOWER HOUSING

Design: LT450A-TT-1.5" thick  
6 - 8 dBA Reduction



## ROTARY SCREW LIQUID CHILLER

Design: LT450A-TT-2.5" thick  
8.8 dBA Reduction



## MULTISTAGE COMPRESSOR & MOTOR HOUSING

Design: LT450A-TT-1.5" thick  
8.8 dBA Reduction

## INSULTECH® Blanket Insulation...

### Advantages

- Can be installed with plant personnel
- Can be removed and reused numerous times
- Is a closed insulation system
- Is custom-fit to existing conditions
- Is an ideal replacement for Asbestos
- Is vibration resistant

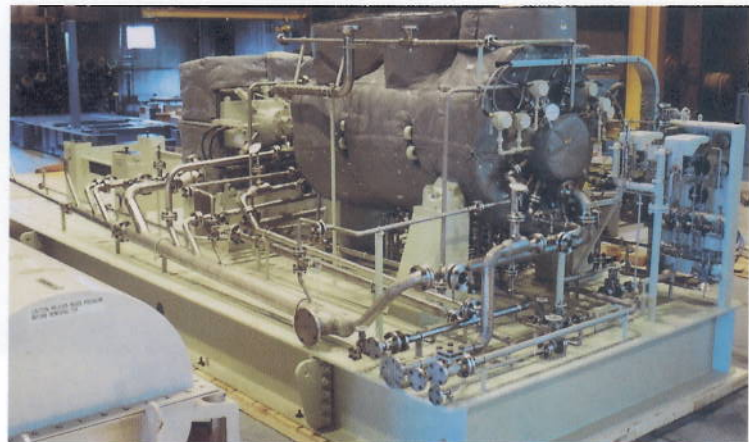
### Applications

- Ejectors
- Gear Box Casings
- Steam and Gas Turbine Casings
- Compressor Housings
- Exhaust Ducting
- Pressure Reducing Valves
- Custom Sound Curtains
- Liquid Chillers



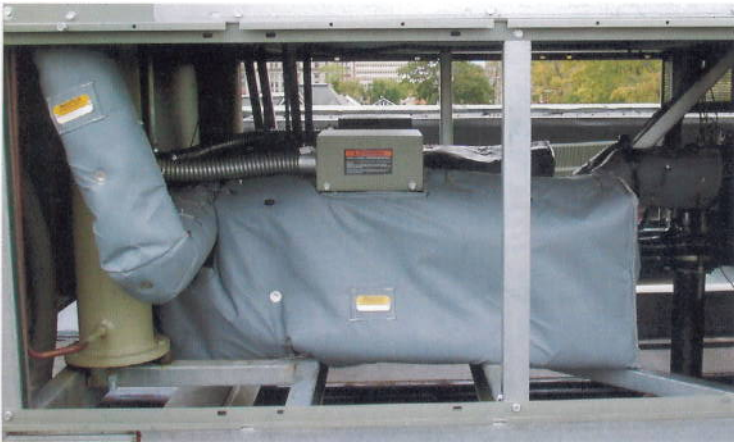
## METAL FRAMEWORK & CUSTOM-BUILT SOUND ENCLOSURE

Design: LT250A-VP-1.5" thick  
10.3 dBA Reduction



## AXIAL COMPRESSOR & GEAR DRIVE

Design: LT450A-TT-2.0" thick  
8 - 10 dBA Reduction



**SCREW COMPRESSOR & DISCHARGE PIPING**

Design: LT450A-TT-1.5" thick  
6 - 8 dBA Reduction



**HIGH PRESSURE GAS PIPELINE**

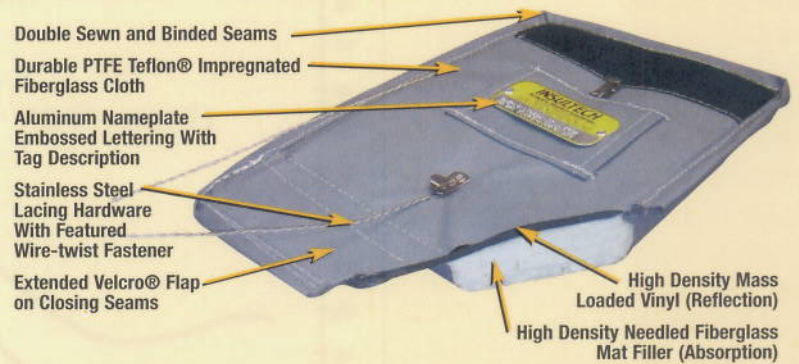
Design: LT450A-TT-2.0" thick  
12 dBA Reduction



**6 STAGE STEAM EJECTOR/CONDENSER**

Design: LT450A-TT-2.0" thick  
12 dBA Reduction

**INSULTECH<sup>®</sup>**  
*Design Features...*



**20" STEAM INLET - PRV STATION**

Design: LT450A-TT-2" thick



**RECIP. COMPRESSOR ENCLOSURE**

Design: LT250A-VP-1.0" thick  
4 dBA Reduction

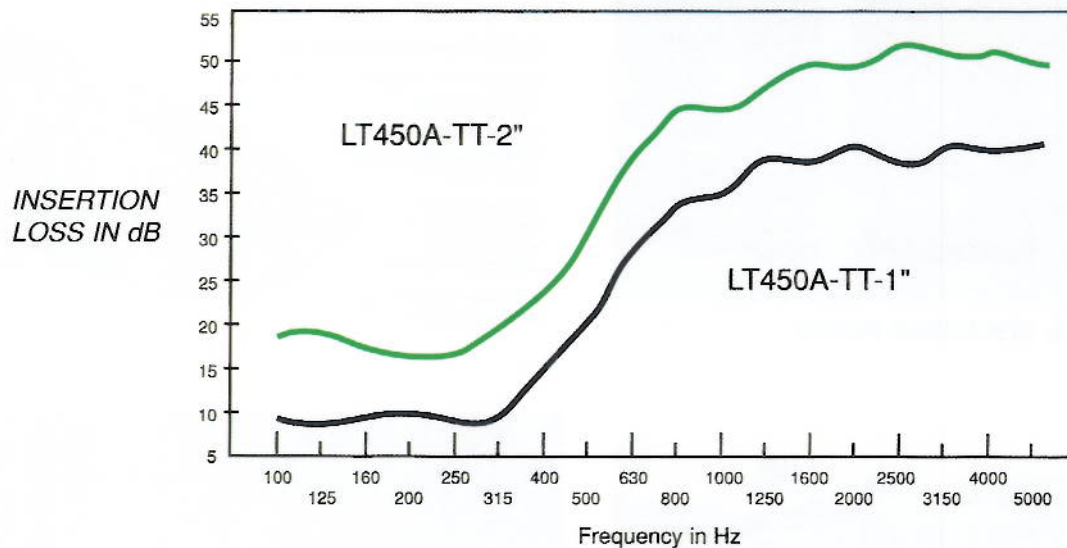
# INSULTECH®

REMOVABLE, REUSABLE BLANKET INSULATION

**FOR...SOUND  
ATTENUATION**  
**Reduce Harmful  
Noise At The Source!**

## Test Results...

INSERTION LOSS IN PERFORMANCE COMPARISONS



107dBA SOURCE	A-WEIGHTED MEASUREMENTS		LINEAR WEIGHTED MEASUREMENTS	
	LT 450A-TT-1" Noise Reduction (in dBA)	LT 450A-TT-2" Noise Reduction (in dBA)	LT 450A-TT-1" Insertion Loss (in dB)	LT 450A-TT-2" Insertion Loss (in dB)
Test Frequency (in Hz)				
100	8	19	8	18
125	8	20	7	19
160	9	17	9	17
200	9	16	9	16
250	8	17	8	16
315	10	20	9	20
400	14	24	14	23
500	21	30	20	30
630	28	39	27	39
800	34	44	33	44
1000	35	44	34	43
1250	38	46	37	46
1600	37	49	36	49
2000	38	48	38	48
2500	37	51	36	51
3150	40	50	39	50
4000	39	49	38	50
5000	41	49	40	49

With the following listed Noise Reductions measured in the A-Weighting, the total Noise Reduction from the 107 dBA loud-speaker level over a 100-5000 Hz frequency band would be: 20.8 dBA for design LT450A-TT-1" Thickness and 29.5 dBA for design LT450A-TT-2" Thickness.

The above data is representative of (ASTM) Test Procedure E-1222-87 for the laboratory measurement of the insertion loss of pipe lagging systems. Shannon Enterprises will not be warranted for performance results of INSULTECH® Blanket Insulation expressed or implied.



75 Main Street, P.O. Box 199 • North Tonawanda, NY 14120  
(716) 693-7954 • FAX (716) 693-1647  
[www.blanket-insulation.com](http://www.blanket-insulation.com)